

COMMONWEALTH OF KENTUCKY
 DEPARTMENT OF STATE ROADS AND HIGHWAYS
 FRANKFORT

**STANDARD 200' HIGH TRUSS
 20'-0" CLEAR ROADWAY**

SHEET No. 1 of 5 SHEETS

DRAWING NO. 1427
 INDEX
 DATE
 CHECKED BY J. V. K.
 REVISED 6-24-27
 8'-3" 21 Railings moved out 16 1/2"

SUBMITTED BY
 APPROVED BY
 DESIGNED BY R.O.

BRIDGE ENGR.
 STATE HIGHWAY ENGR.
 CHIEFMAN STATE HIGHWAY COMMISSION
 DRAWN BY E. C. CRO

BRIDGE

FED. ROAD DIST. NO.	STATE	FED. AID FISCAL YEAR	SHEET NO.	TOTAL SHEETS
7	KY.	24	1921	5

BILL OF REINFORCING STEEL FOR CONCRETE FLOOR

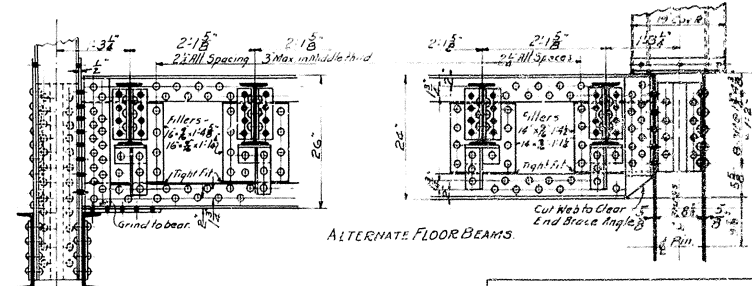
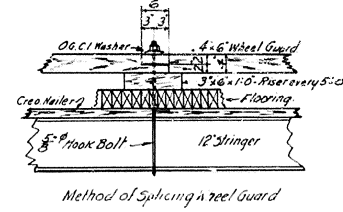
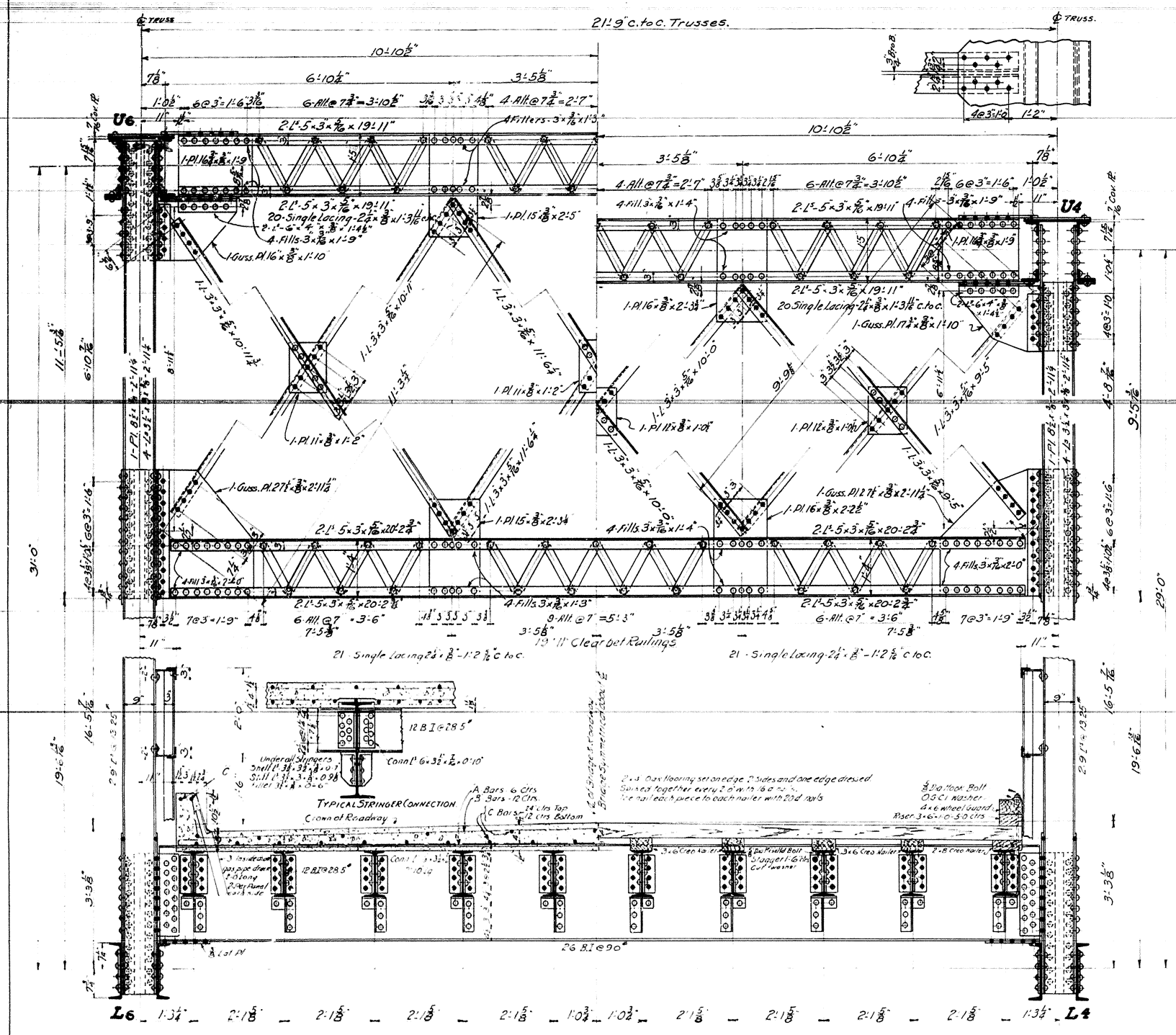
MARK	NO.	SIZE	LENGTH	BENDING
A	405	5" Def Bar	21'-6"	12'-9" →
B	203	" "	20'-10"	12'-0" ↓
C	210	" "	35'-2"	Straight.

ESTIMATED QUANTITIES FOR CONCRETE FLOOR

Class A Concrete	83.95	Cubic Yards c.r.b.
Reinforcing Steel	14,218	Pounds
Asphalt Surfacing	418	Square Yards
Drain Pipe	848	Pounds

NOTE: Bituminous surfacing to consist of 1 1/2" compacted rock asphalt or of bituminous concrete (Tapeka mix) as specified in the specifications of the Road Office of the Dept of State Roads and Highways.

Paint Coat Concrete floor course. The surface of the concrete floor shall be left rough in order to afford a better anchorage for the asphalt. After the concrete has been properly cured, the surface shall be thoroughly cleaned and shall be evenly covered with a thin paint coat consisting of approximately sixty per cent (65%) of asphalt cement having a penetration of 175 (50) S. Scrim (a) to thirty per cent (35%) of kapa or gasoline. About one sixth (1/6) gallon shall be used to every square yard of surface to be covered with the foregoing surface. After the volatile oils have evaporated the asphalt shall be laid.



DRAWING NO.	INDEX
201427	2
DATE	5-28-21
CHECKED BY	J. L. ...
REVISED	8-3-21 Railing moved out to 11"

SECTION U6-L6

SECTION U4-L4

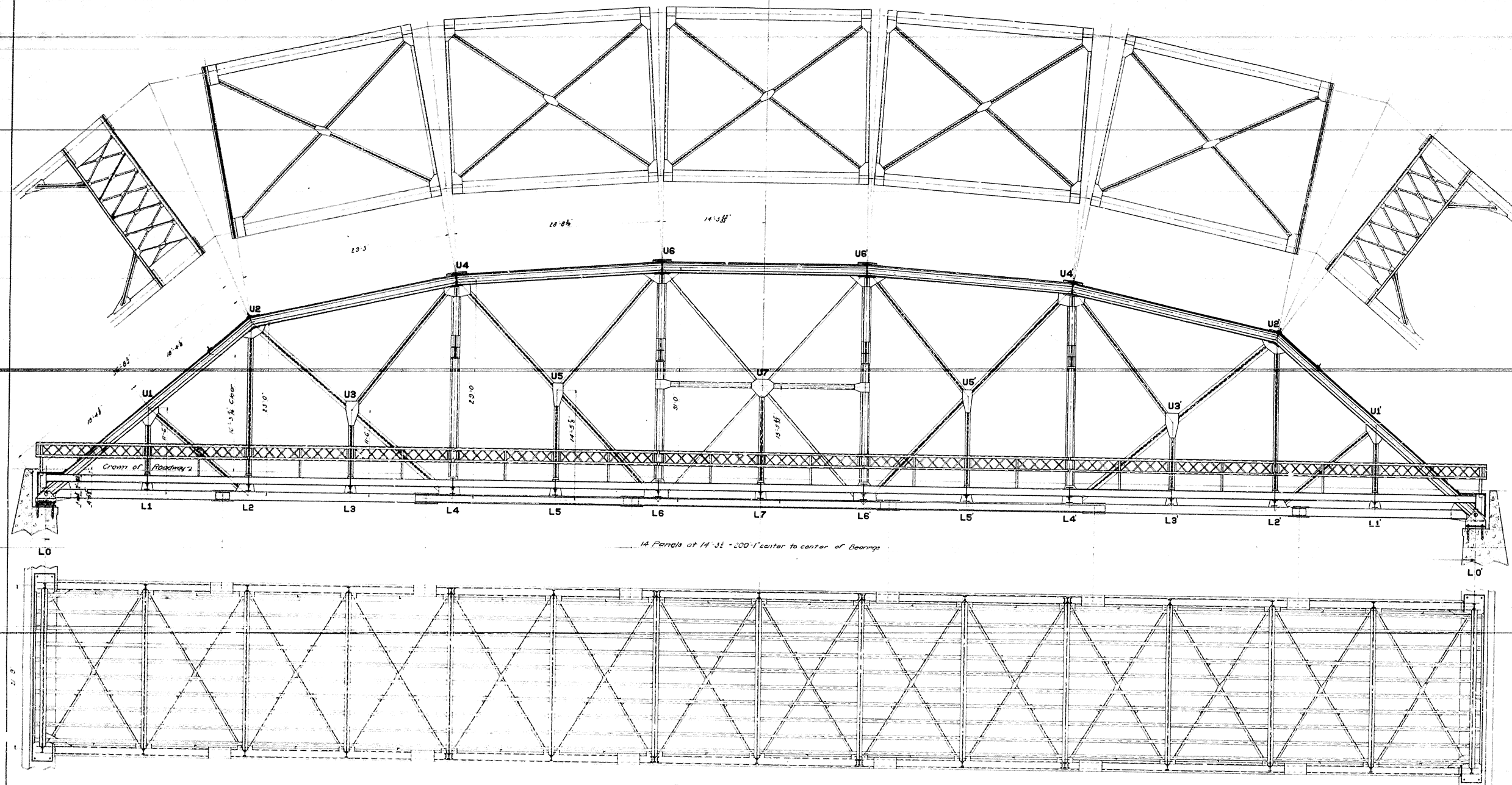
COMMONWEALTH OF KENTUCKY
 DEPARTMENT OF STATE ROADS AND HIGHWAYS
 FRANKFORT
STANDARD 200' HIGH TRUSS
20'-0" CLEAR ROADWAY
 SHEET No. 3 OF 5 SHEETS

SPECIAL NOTE
 New Rivet Values as follows

	Shear	Bearing
Floor System	10,000 per sq in	20,000 per sq in
Field driven except above	8,000 per sq in	16,000 per sq in
Shop driven except above	12,000 per sq in	24,000 per sq in

SUBMITTED BY: *James B. ...*
 APPROVED BY: *J. L. ...*
 CHECKED BY: *J. L. ...*
 REVISED BY: *J. L. ...*

FED. ROAD DIST. NO.	STATE	PER. AN. PROJ. NO.	FISCAL YEAR	SHEET NO.	TOTAL SHEETS
7	KY.	24	1921	5	9



PLAN & ELEVATION.

DRAWING NO.	INDEX
1427	
DATE	5-20-1911
CHECKED BY	S.F.O. Shender
REVISED	

COMMONWEALTH OF KENTUCKY
 DEPARTMENT OF STATE ROADS AND HIGHWAYS
 FRANKFORT

STANDARD 2000 HIGH TRUSS
20-0 CLEAR ROADWAY

SHEET No. 5 OF 5 SHEETS

SUBMITTED BY: *[Signature]* CHIEF ENGINEER
 APPROVED BY: *[Signature]* STATE HIGHWAY ENGINEER
 APPROVED BY: *[Signature]* CHAIRMAN STATE HIGHWAY COMMISSION

DESIGNED 4-25-10

BRIDGE